



**DEPARTMENT OF ADMINISTRATION  
HEARINGS DIVISION**

---

**APPEALS OFFICER  
STATISTICAL REPORT FY 2015**

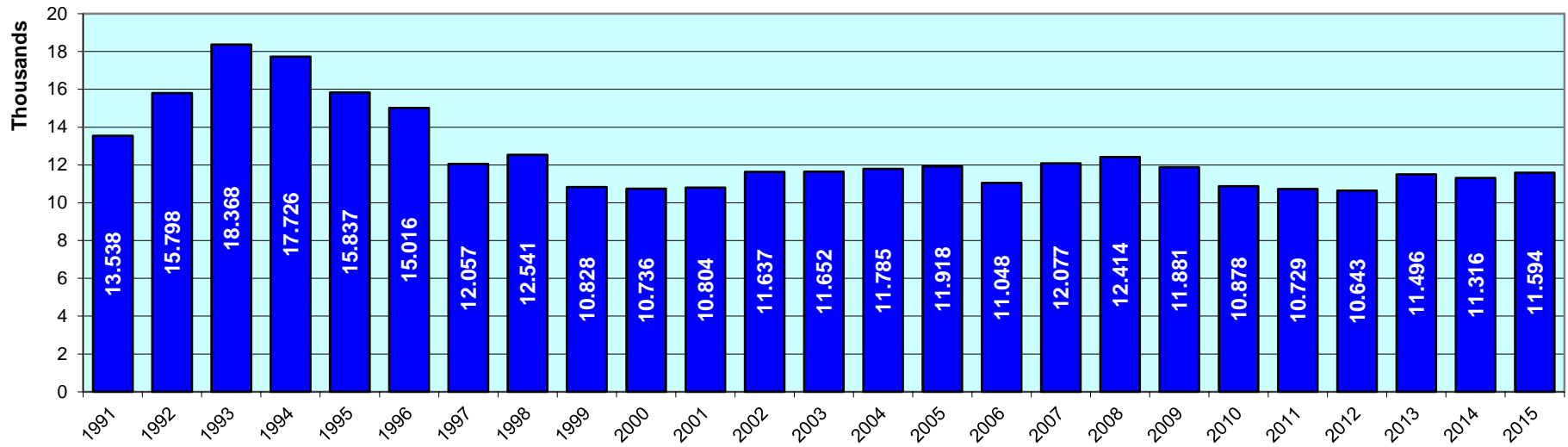
\* \* \*

**YEAR END REPORT**

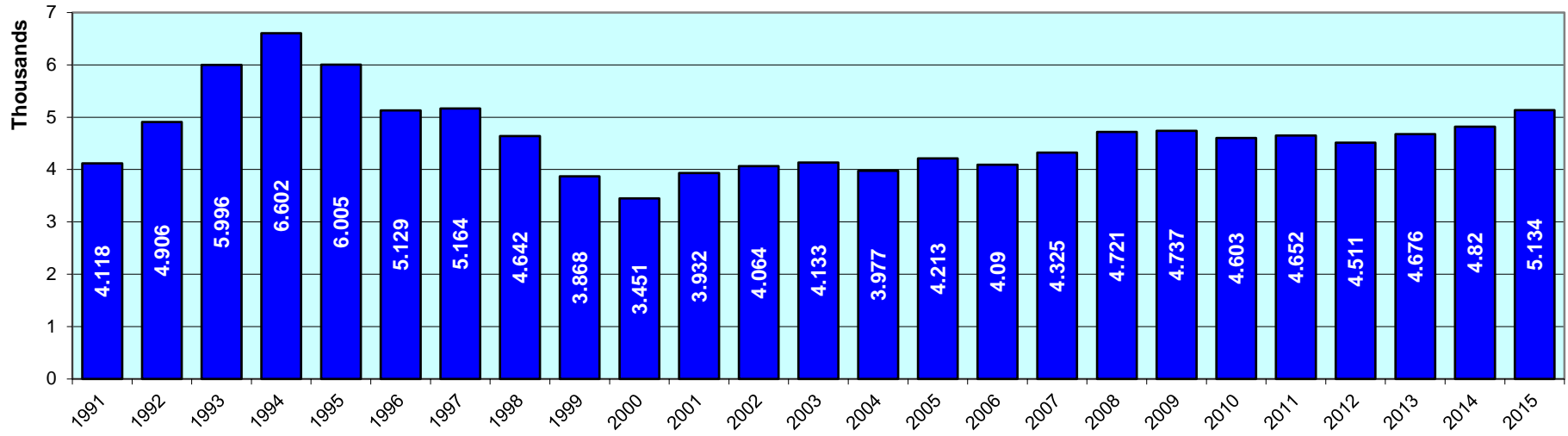
# Hearings Division

## Cases Filed FY 1991 through FY 2015

### Before the Hearing Officer



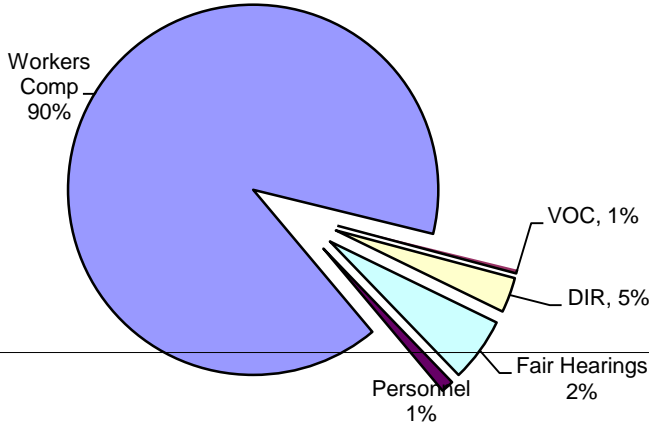
### Before the Appeals Officer



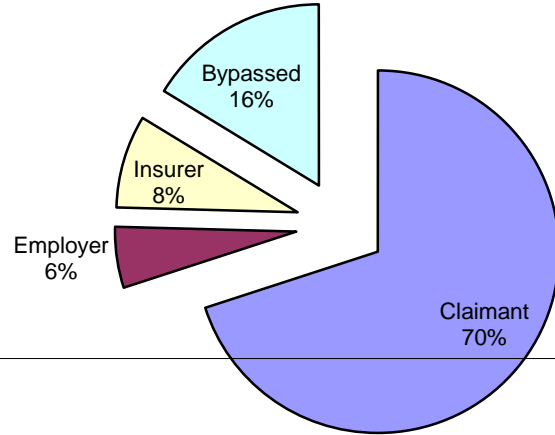
# Appeals Officer FY '15

## Year End Overview

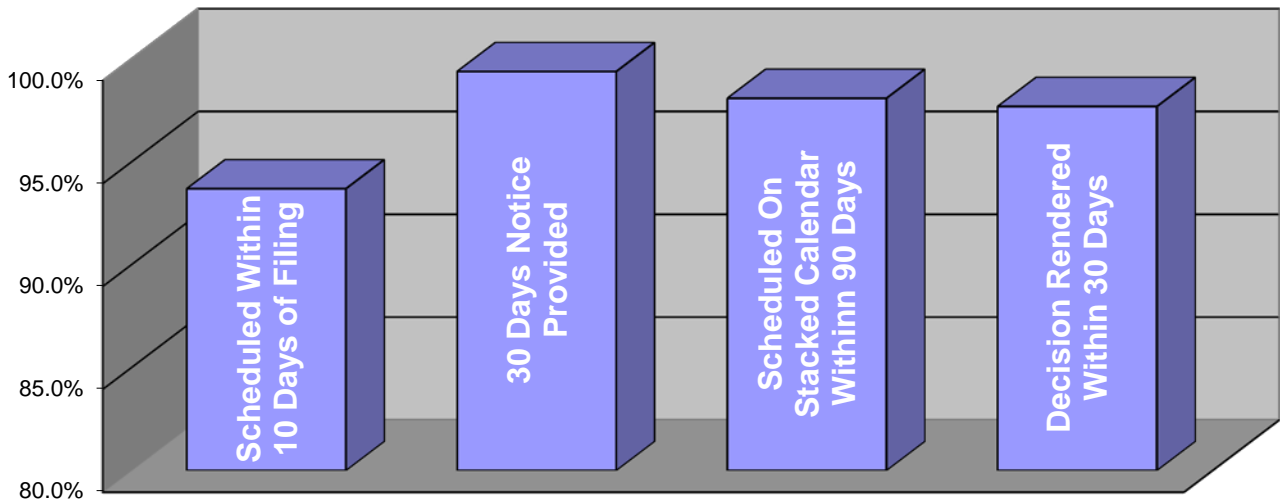
**Types of Hearing**



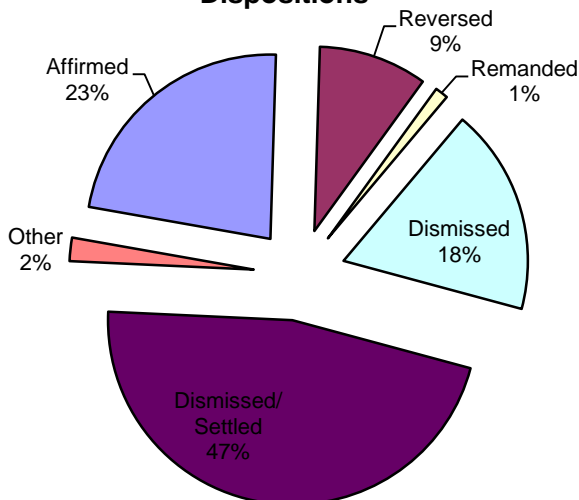
**Cases Filed By**



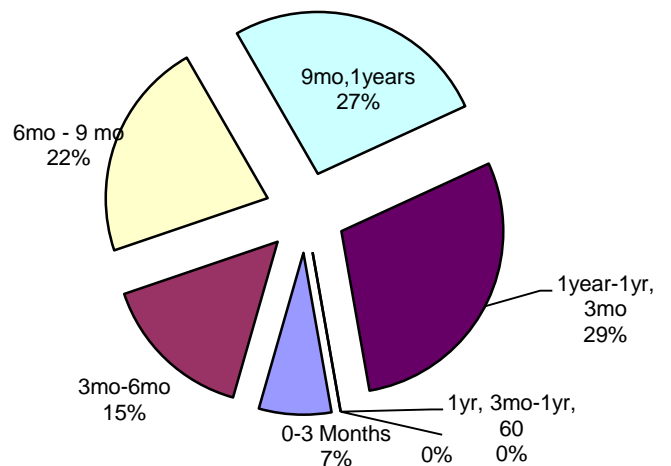
**Statutory Compliance**



**Dispositions**



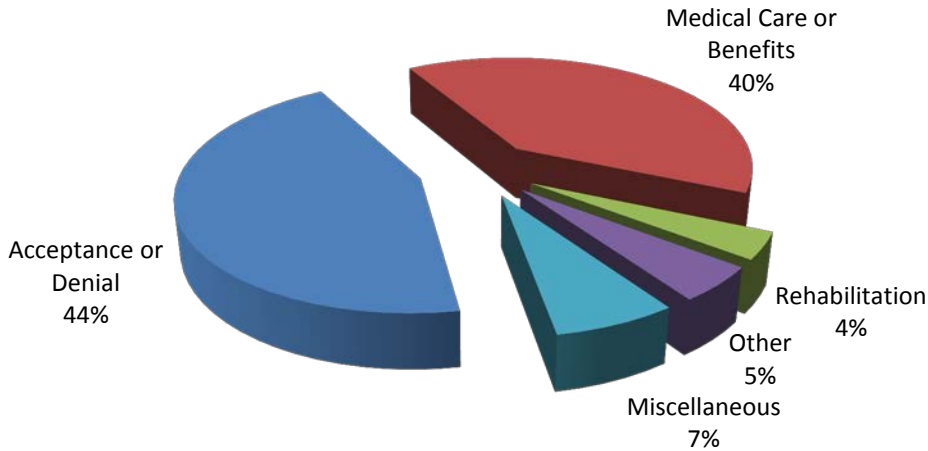
**Length of Closed Cases**



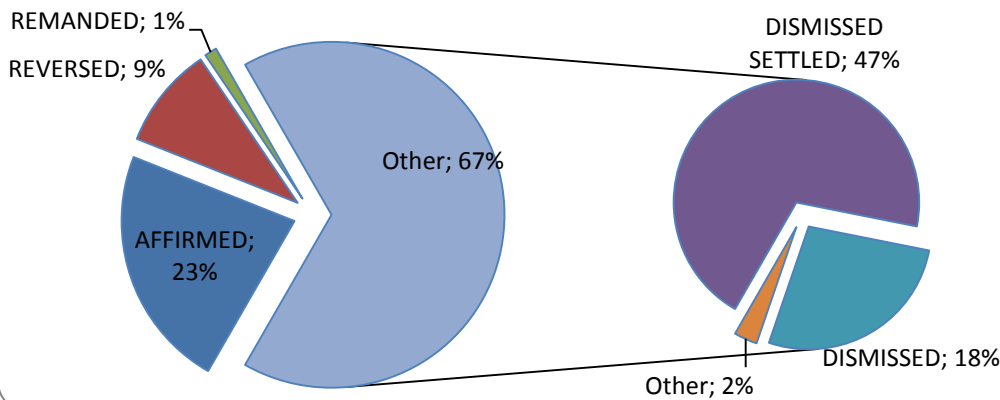
# Appeals Officer FY '15

## Year End Overview (cont.)

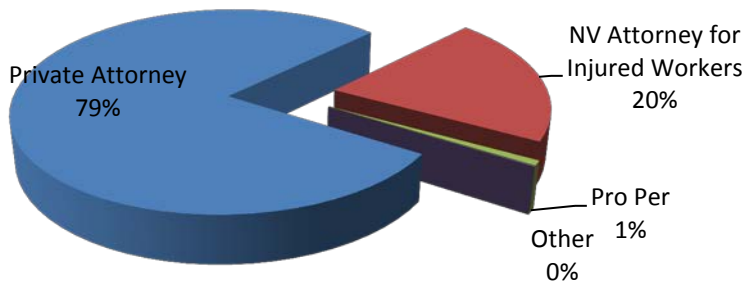
### Before The Appeals Officer Issue of Cases, FY15



### Before The Appeals Officer Disposition of Cases, FY15

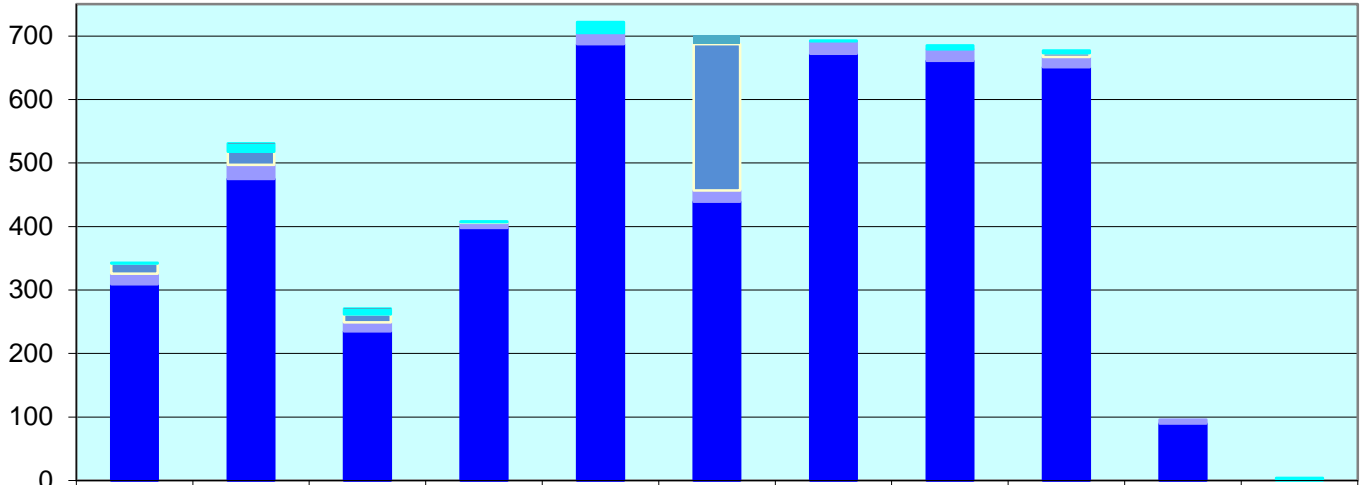


### Before The Appeals Officer, FY15 Representation of the Injured Worker



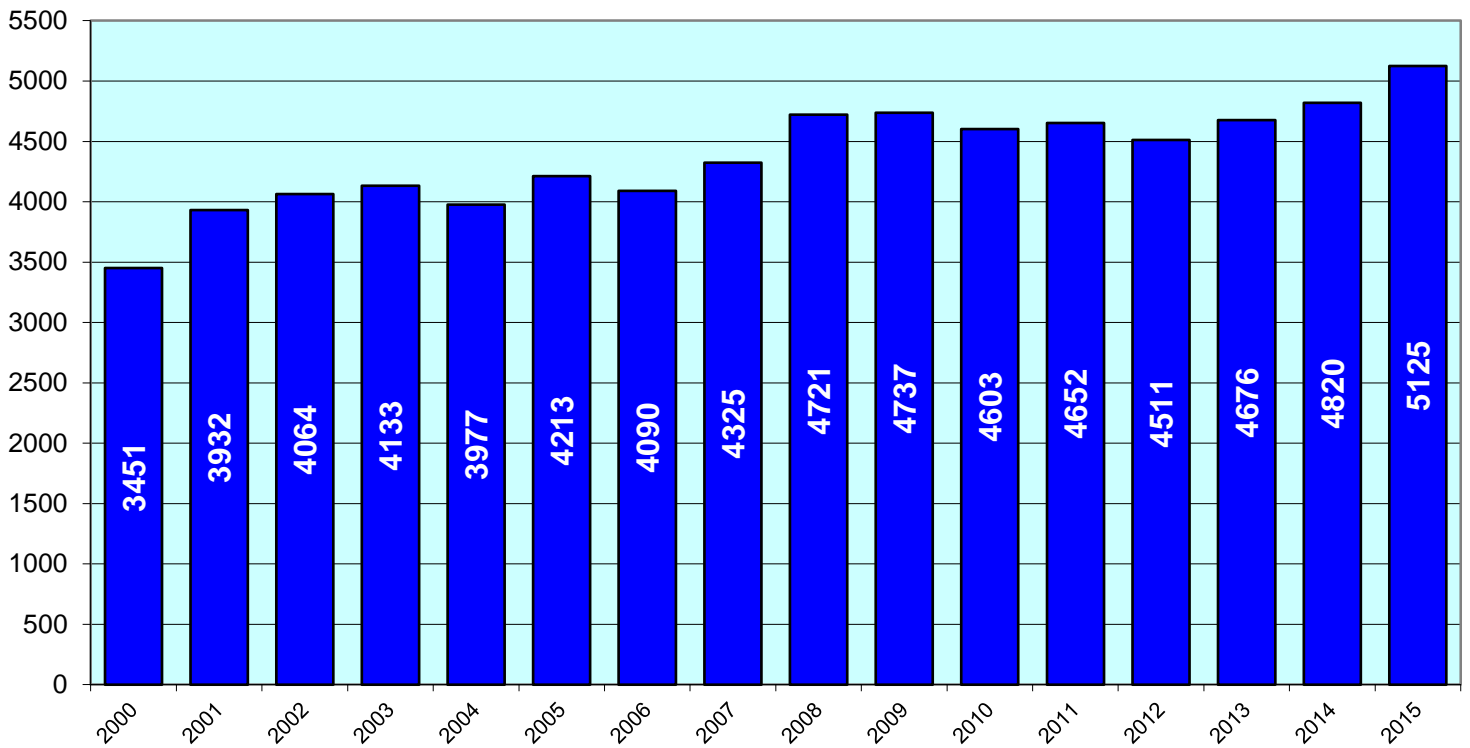
# Appeals Officer FY '15 Year End Report

### Total Cases Assigned During FY'15



	Ward	Nielsen	Derrah	York	Pulliam	Bradley	Krohn	Morgando	Lychuk	Lindsey	Special AOs
VOC	0	1	1	0	0	14	0	0	0	0	0
Personnel	1	13	9	1	17	0	1	6	4	0	4
Fair Hearings	16	21	13	1	0	230	0	0	6	0	0
DIR	17	22	14	8	18	18	20	18	16	6	0
Workers Comp	309	475	235	398	687	439	672	661	651	90	0

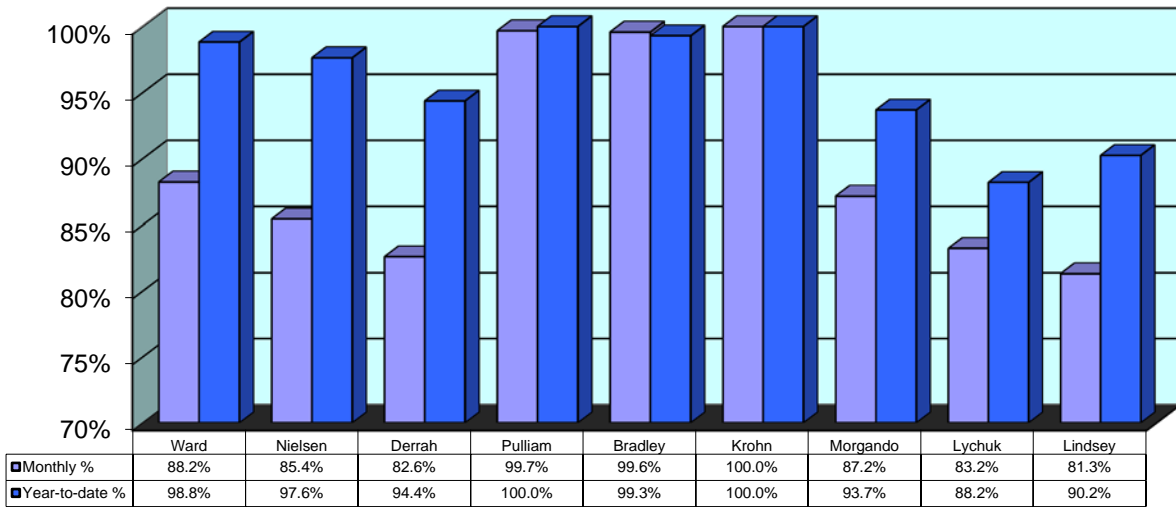
### Appeals Office Caseload History, FY'00 - FY'15



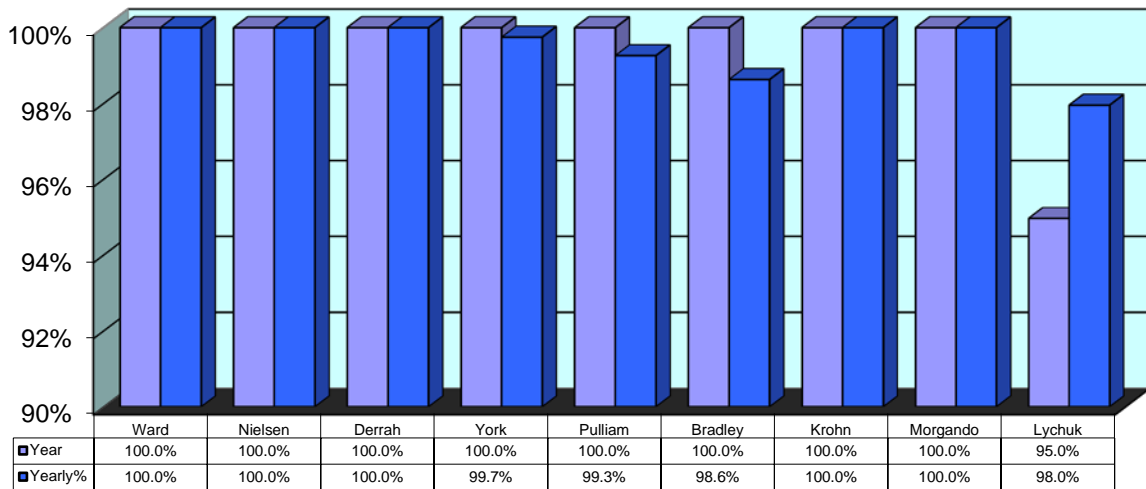
# Appeals Officer FY '15

## Year End Report

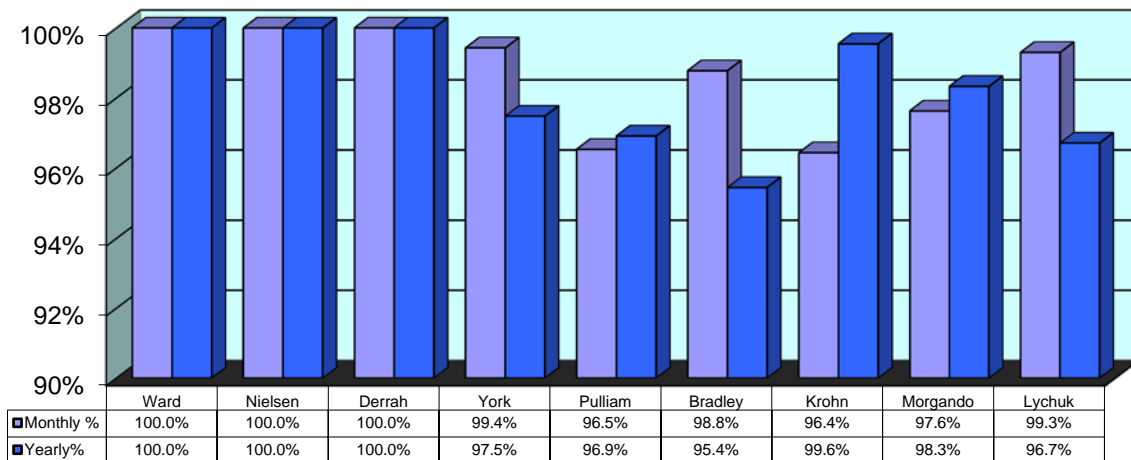
### Scheduled within 10 Days



### 30 Days Notice of Hearing Given



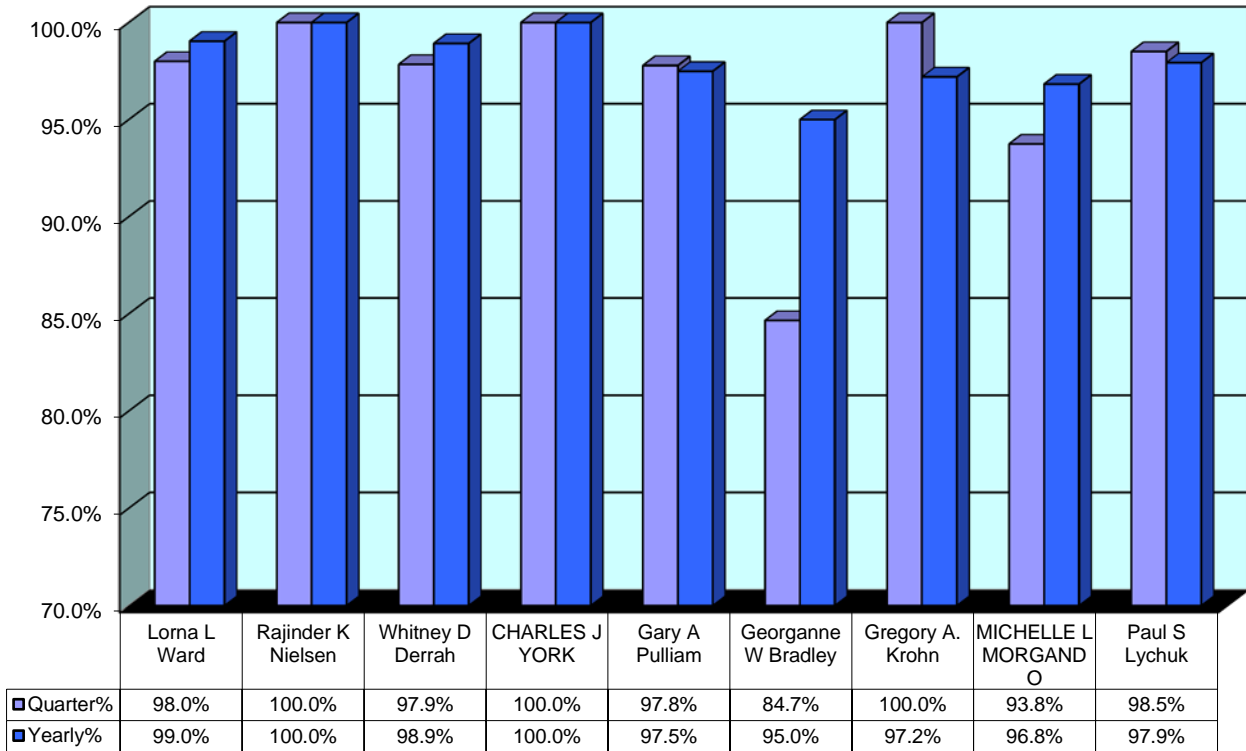
### Calendar in 90 Days of Filing



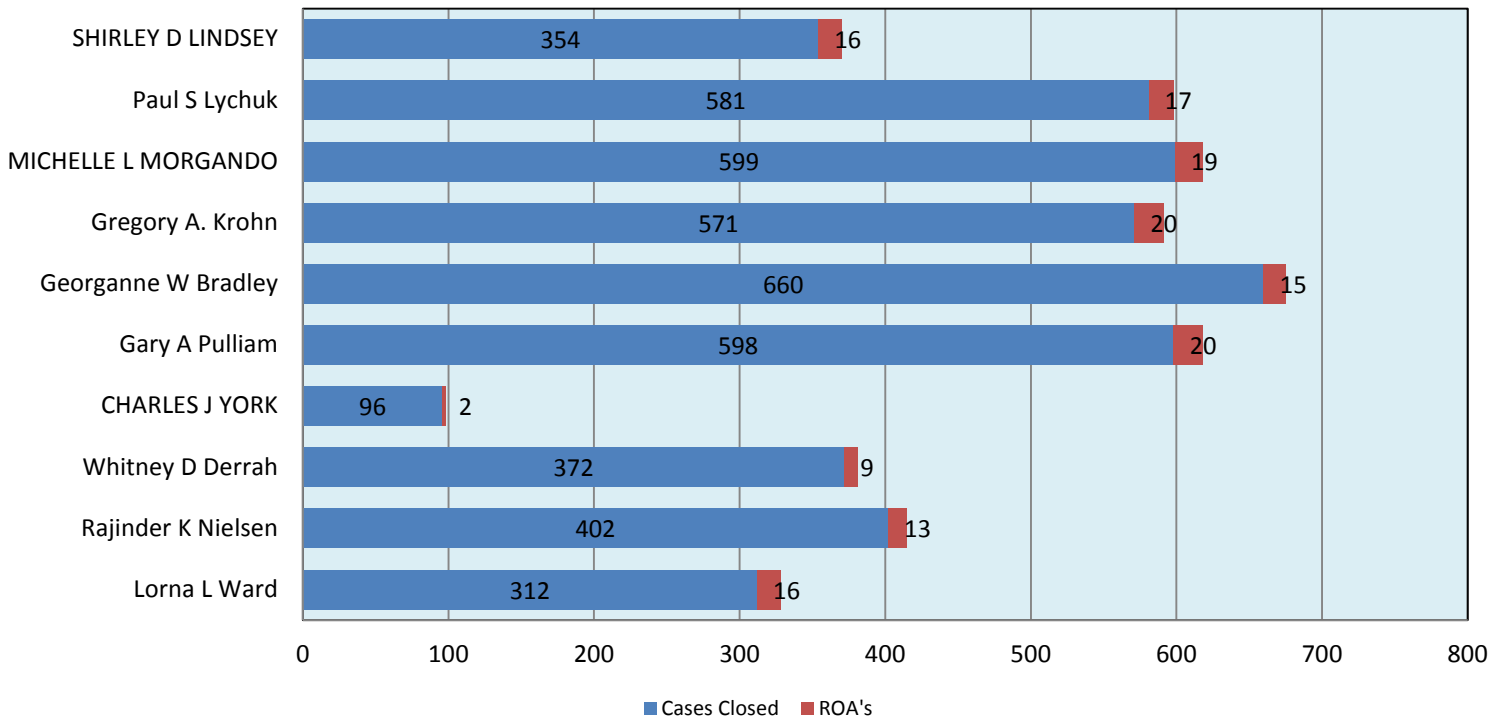
# Appeals Officer FY '15

## Year End Report

**Decisions Rendered within 30 Days**

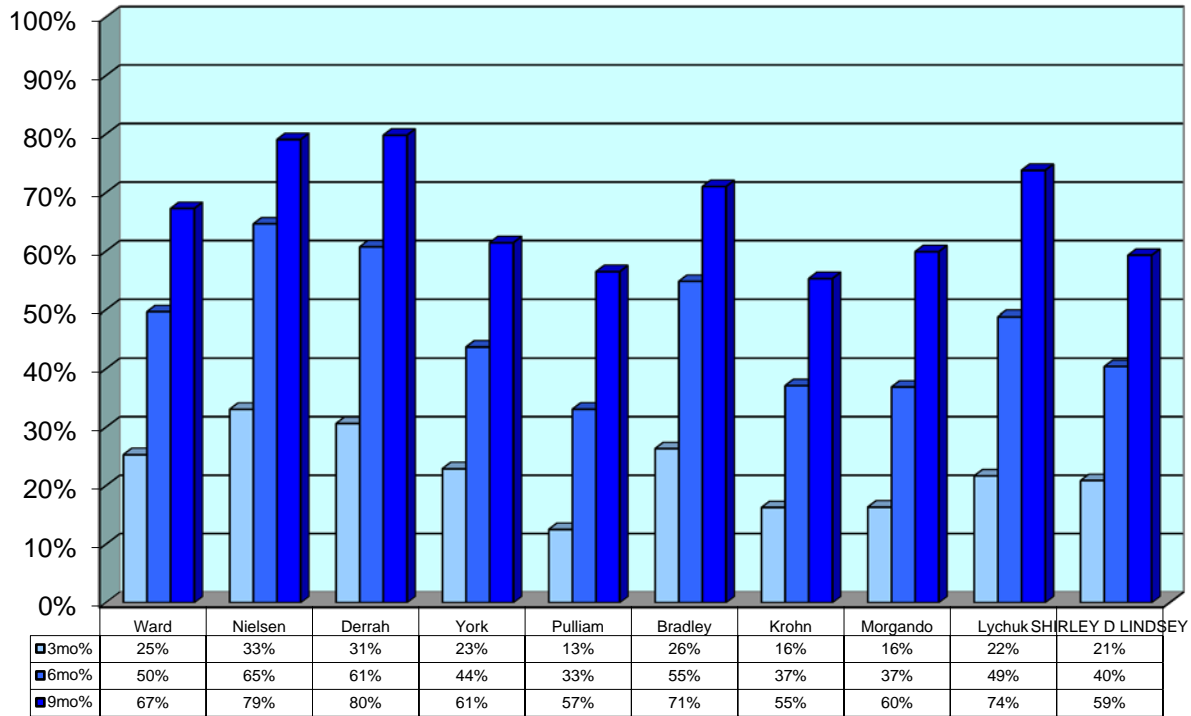


**Cases Resolved vs. Appealed to District Court In FY'15**

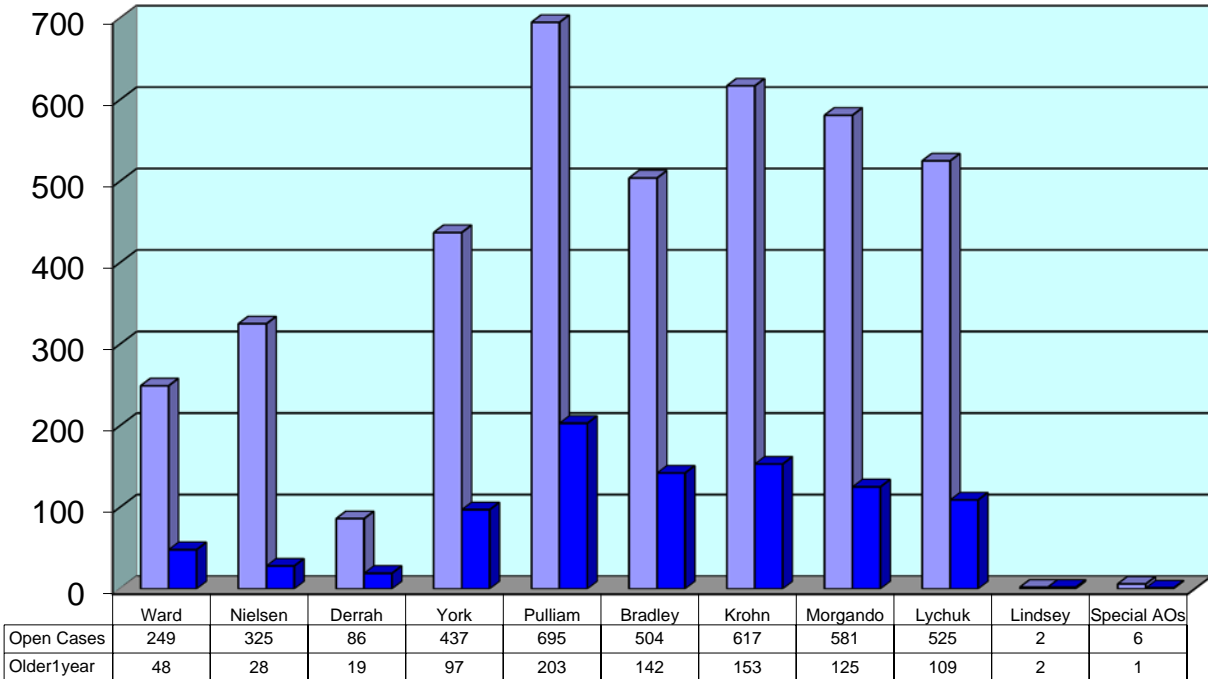


# Appeals Officer FY '15 Year End Report

**Percentage of Cases Closed Within 3, 6 and 9 Months**



**Current Open Case Count as of July 1, 2015**





# Appeals Officer FY '15

## Year End Report

---

### Case list of ALL cases out of statute for the year.

#### Scheduled in 10

AO	Cases
CC	53249
CJY	1503831
CJY	1504490
CJY	1504495
CJY	1504502
CJY	1504504
CJY	1504535
CJY	1504540
CJY	1504542
GB	1501494
GB	1501519
GB	1501598
GB	1501721
GB	1502432
GB	1502435
GB	1502437
GB	1502452
GB	1502453
GB	1502454
GB	1502495
GB	1503399
GB	1503405
GB	1504414
GB	1504415
GB	1504477
GB	1504515
GB	1504565
GB	1504566
GB	1504567
GB	1504568
GB	1504569
GB	1504570
GB	1504572
GB	1504576
GB	1504579
GB	1504580
GB	1504581
GB	1504582
GB	1504583
GB	1504590

#### Calendar in 90

AO	Cases
CJY	1504490
CJY	1504495
CJY	1504502
CJY	1504504
CJY	1504535
CJY	1504540
CJY	1504542
CJY	1504632
CJY	1505770
CJY	1507274
GB	1504522
GB	1504576
GB	1504580
GB	1504581
GB	1504582
GB	1504583
GB	1504590
GB	1504596
GB	1504599
GB	1504600
GB	1504601
GB	1504603
GB	1504604
GB	1504605
GB	1504606
GB	1504607
GB	1504608
GB	1504609
GB	1504610
GB	1504787
GK	1504631
GK	1508316
GK	1511557
GP	1500929
GP	1501720
GP	1504418
GP	1504516
GP	1504524
GP	1504528
GP	1504544

#### 30 Day Notice

AO	Cases
CJY	1504714
GB	1500994
GB	1504823
GB	1504987
GB	1508966
GP	1507361
PL	1507166
PL	1507167
PL	1507464
PL	1510344
PL	1511317
PL	1512049
PL	1512316
PL	1512403
SL	1503583

#### Decision in 30

AO	Cases
GB	1304160
GB	1304161
GB	1309408
GB	1406383
GB	1406471
GB	1407934
GB	1408997
GB	1409472
GB	1409476
GB	1409640
GB	1410337
GB	1410741
GB	1411005
GB	1411944
GB	1412272
GB	1500729
GB	1501193
GB	1501579
GB	1502649
GB	1502793
GB	1503349
GB	1503823
GB	1503824
GB	1504608
GB	1504987
GB	1505084
GB	1505260
GB	1505567
GB	1505982
GB	1506025
GB	1508539
GB	1508924
GB	96732
GK	1402142
GK	1403438
GK	1403561
GK	1403562
GK	1404383
GK	1406213
GK	1407132

GB	1504596
GB	1504601
GB	1504604
GB	1504605
GB	1504606
GB	1504607
GB	1504608
GB	1504609
GB	1505193
GB	1505194
GB	1506290
GB	1506291
GB	1506757
GB	1506801
GB	1507591
GB	1507592
GB	1509127
GB	1509924
GB	1510828
GB	1511492
GB	1511493
GB	1511585
GB	1511754
GK	1504458
GK	1504573
GK	1508316
GP	1503353
GP	1503468
GP	1504374
GP	1504379
GP	1504381
GP	1504382
GP	1504383
GP	1504384
GP	1504391
GP	1504392
GP	1504394
GP	1504395
GP	1504413
GP	1504416
GP	1504418
GP	1504514
GP	1504516
GP	1504528
GP	1504544
GP	1504546
GP	1504548
GP	1504550
GP	1504552

GP	1504546
GP	1504548
GP	1504550
GP	1504552
GP	1504556
GP	1504557
GP	1504561
GP	1504562
GP	1504577
GP	1504578
GP	1504630
GP	1504636
GP	1508198
MM	1504460
MM	1504465
MM	1504466
MM	1504467
MM	1504468
MM	1504470
MM	1504485
MM	1504486
MM	1504584
MM	1504585
MM	1510381
PL	1502948
PL	1502950
PL	1503332
PL	1504239
PL	1504491
PL	1504494
PL	1504499
PL	1504509
PL	1504511
PL	1504517
PL	1504518
PL	1504519
PL	1504523
PL	1504527
PL	1504531
PL	1504532
PL	1504536
PL	1504539
PL	1504541
PL	1507442
PL	1507443
SL	1504489
SL	1504530
SL	1504545
SL	1504547

GK	1501364
GK	88577
GK	88578
GK	88579
GK	88787
GK	88963
GK	88964
GK	95192
LLW	44137
LLW	46890
LLW	48322
MM	1300736
MM	1301475
MM	1303099
MM	1303301
MM	1309875
MM	1403454
MM	1403971
MM	1404893
MM	1405279
MM	1406657
MM	1407384
MM	1408419
MM	1412139
MM	1505505
MM	95064
MM	96498
MM	96499
MM	96500
PL	1406055
PL	1407994
PL	1408129
PL	1408170
PL	1408937
PL	1409942
PL	1411462
PL	1411853
PL	1500733
PL	1503726
PL	1504541
SL	1407175
SL	1411241
WDD	43053
WDD	48552
WDD	48555
WDD	51058

GP	1504553
GP	1504555
GP	1504556
GP	1504557
GP	1504558
GP	1504559
GP	1504561
GP	1504562
GP	1504577
GP	1504578
GP	1504636
GP	1504693
GP	1506560
GP	1507466
GP	1507724
GP	1508198
MM	1502969
MM	1503875
MM	1504457
MM	1504459
MM	1504460
MM	1504465
MM	1504466
MM	1504467
MM	1504468
MM	1504470
MM	1504478
MM	1504479
MM	1504480
MM	1504485
MM	1504486
MM	1504487
MM	1504584
MM	1504585
PL	1502256
PL	1502948
PL	1503352
PL	1504420
PL	1504491
PL	1504494
PL	1504496
PL	1504497
PL	1504499
PL	1504501
PL	1504503
PL	1504507
PL	1504509
PL	1504510
PL	1504511

SL	1504551
----	---------

PL	1504512
PL	1504517
PL	1504518
PL	1504519
PL	1504520
PL	1504523
PL	1504527
PL	1504531
PL	1504532
PL	1504534
PL	1504536
PL	1504537
PL	1504539
PL	1504541
PL	1504560
PL	1507464
PL	1507593
PL	1508722
PL	1510344
PL	1510968
PL	1511616
PL	1512614
SL	1502017
SL	1504489
SL	1504530
SL	1504545
SL	1504547
SL	1504551